



# A World of Ice

by Lois Grippio

## Winter at Sea

It was the winter of 1933. Louise Arner Boyd had been at sea for six weeks. Louise was an explorer. She and her team were making a map. It was of the shore of northeast Greenland. The work was dangerous.

The land was an icy wilderness. There was no sign of life.

### READ & RESPOND

Author's Craft

**Are there any descriptive words on this page? What do those words make you see, hear, smell, taste, or feel?**

---

---



The ship moved toward a glacier. Louise stared at the mountain of ice. She took photos. She made notes of everything she saw.

It was very cold. There was no shelter from the wind. Louise did not mind. “There is never any hardship in doing what interests you,” she said.

Copyright © by Houghton Mifflin Harcourt Publishing Company.

**READ & RESPOND**

Author's Craft

**How do you think the author feels about Louise? Why do you think so?**

---

---

---



## Stuck!

All at once, the ship shook. Louise fell to her knees. There was a loud groan. The ship had run aground.

The captain said, “Reverse the engines!” The crew ran the engines at full speed. The ship didn’t move.

They were stuck.

### READ & RESPOND

Author’s Craft

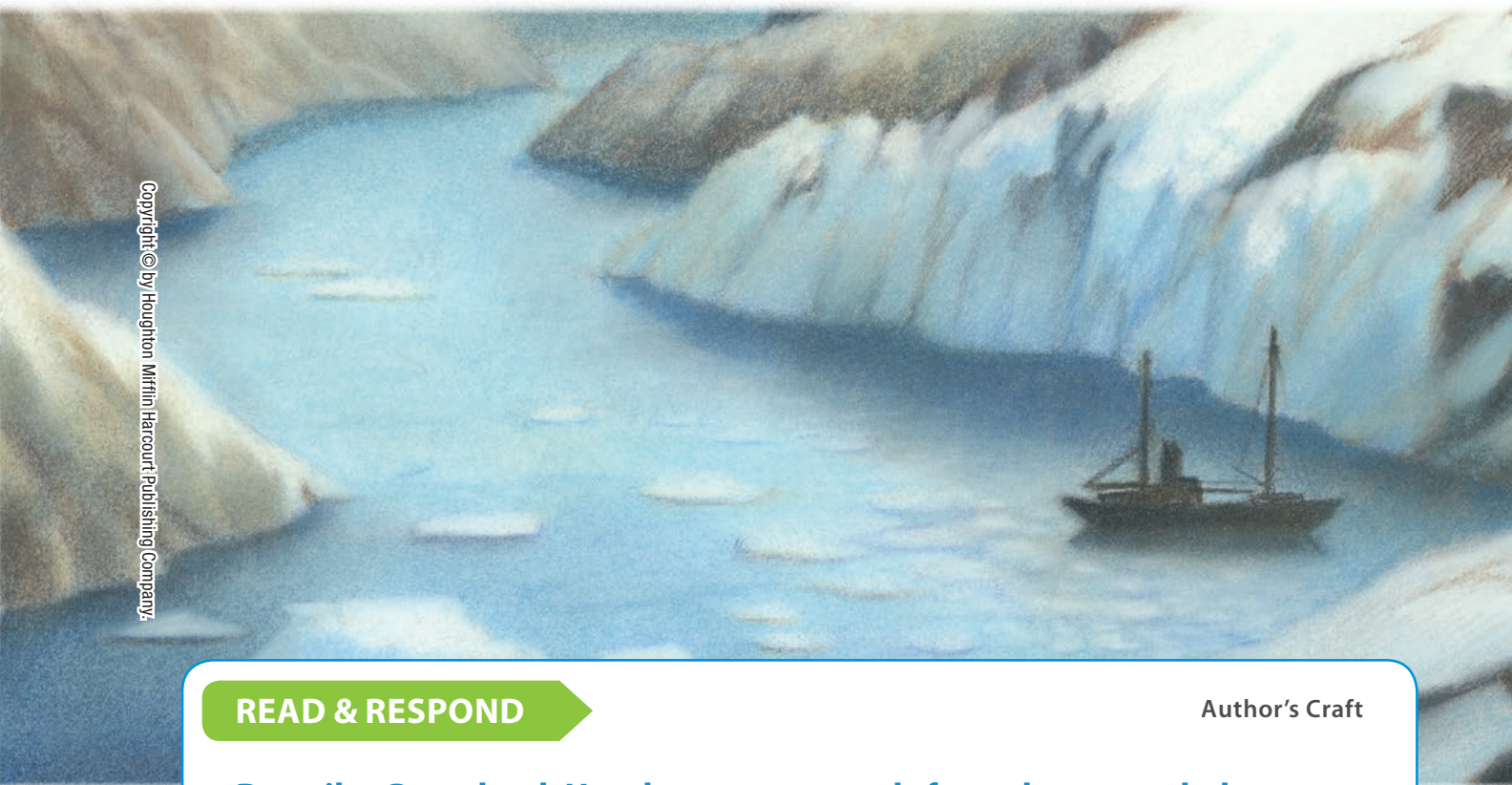
**Remember that the mood of a text is how you feel while reading. What is the mood at this point in the text?**

---

---

Northeast Greenland was a bad place to be stuck. The climate was harsh. In winter, it was the worst. Many cold and hungry explorers had died in this region.

There were no other ships nearby. There were no towns or villages. There was no one to save them. Louise and her team would have to save themselves.



Copyright © by Houghton Mifflin Harcourt Publishing Company.

**READ & RESPOND**

Author's Craft

**Describe Greenland. Use the sensory words from the text to help you.**

---

---

---



## A Dangerous Situation

The tide was getting lower. The water level went down. The crew watched. Their constant worry was that the ship would tip over. If it did, they could do nothing.

The ship did not tip over.

When the tide came back in, the ship didn't float off the mud. It was too heavy. It was still stuck.

Copyright © by Houghton Mifflin Harcourt Publishing Company.

### READ & RESPOND

Author's Craft

**Has the mood changed? Describe how you felt while reading this page.**

---

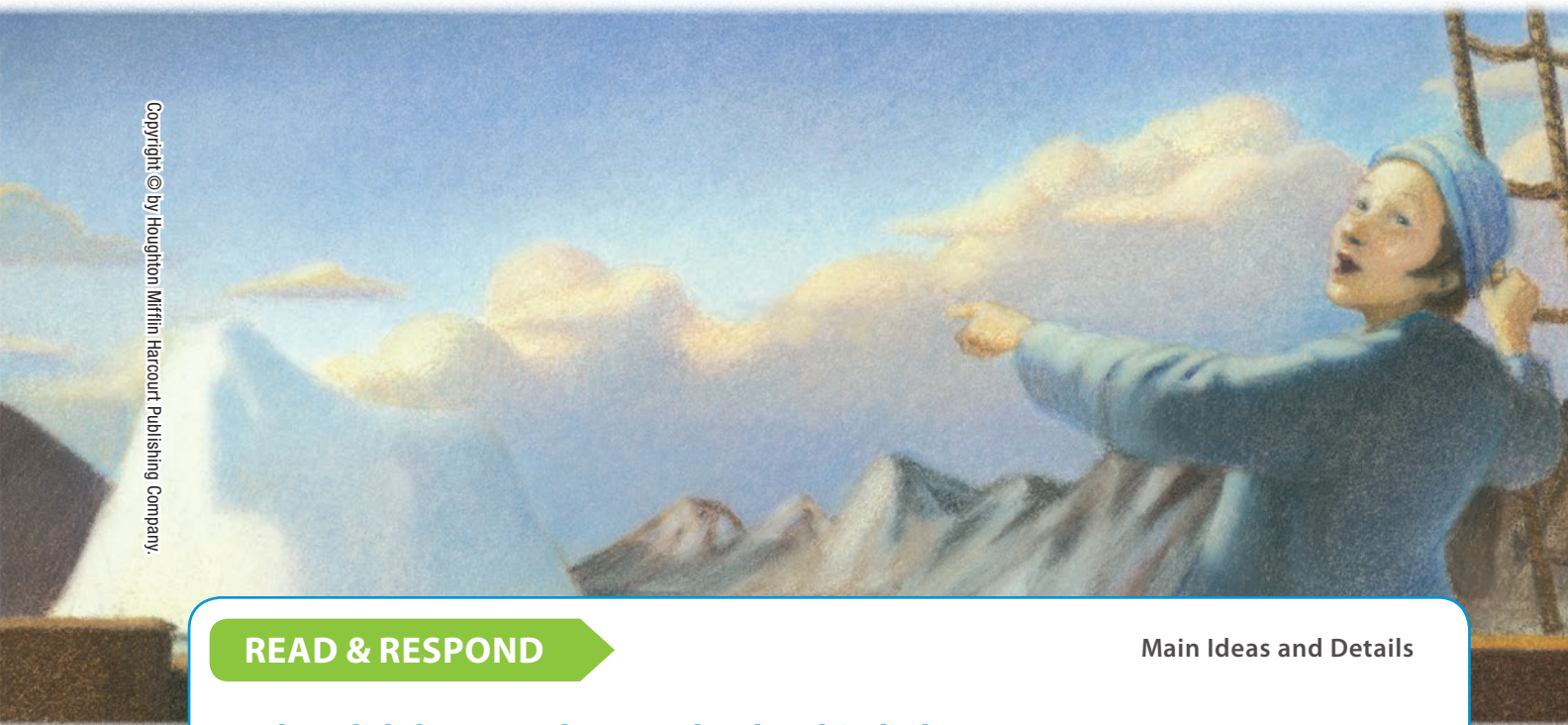
---

---

# Louise Has a Plan

The crew had to make the ship lighter. The men took three boats off the ship. They unloaded oil and gas. They threw coal overboard.

The tide came in. The ship was still stuck. Louise saw a big iceberg. She had an idea. The crew tied a cable around the iceberg. They would try to pull themselves out of the mud!



Copyright © by Houghton Mifflin Harcourt Publishing Company.

## READ & RESPOND

Main Ideas and Details

**What did the crew do to make the ship lighter?**

---

---

---



The captain ordered the crew to start the engines. The cable was attached to a crank. The engines roared. The crank pulled the cable.

The cable stretched tightly. It began to pull the ship toward the iceberg. The ship lifted off the mud! It was floating again.

Louise's plan had worked. The ship moved safely out to sea.

### READ & RESPOND

Author's Craft

**Remember that the tone is how an author feels about a subject. What is the tone of this text?**

---

---



# Reread and Respond

**1** What happened first, next, and last?

---

---

---

**Hint**

You'll need to thumb through the whole story.

**2** Why did the crew worry about the tide going down after the ship got stuck?

---

---

---

**Hint**

For a clue, see page 126.

**3** Would you like to explore a region like northeast Greenland? Explain.

---

---

---

**Hint**

Details about the region are on pages 122, 123 and 125.